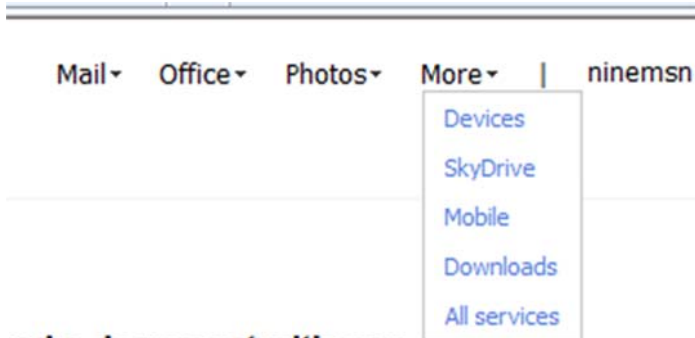
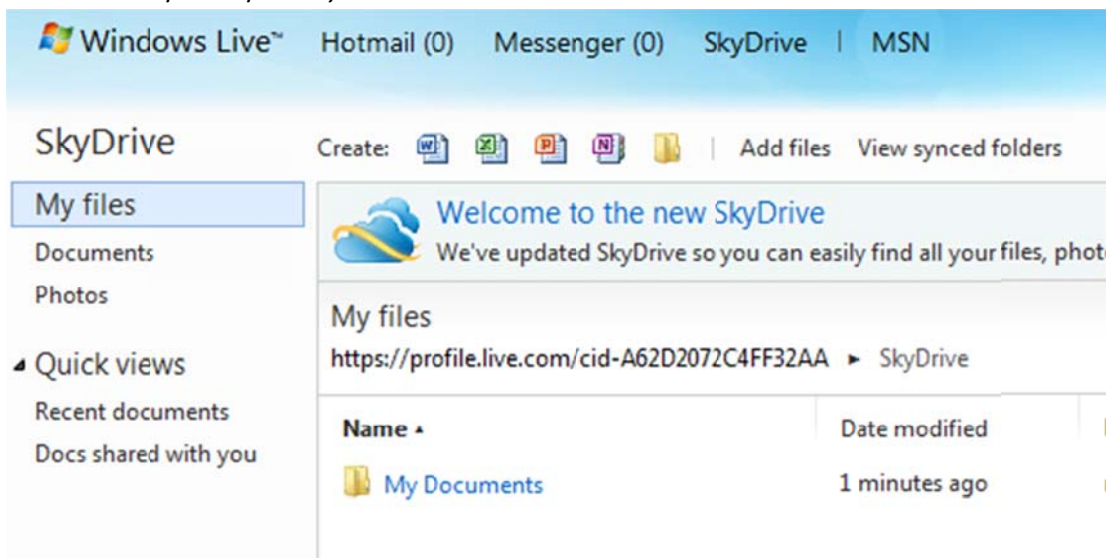


SkyDrive

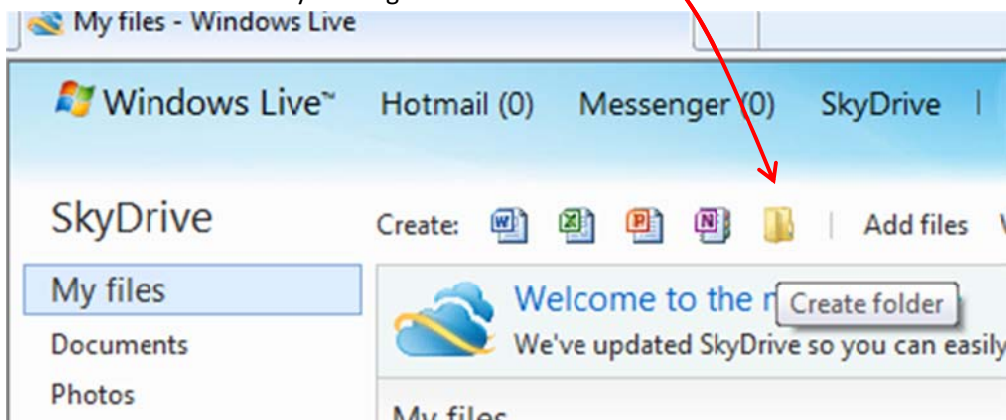
1. SkyDrive gives you 25 Gb of space to store documents. You can access SkyDrive by clicking on *More/SkyDrive*.



2. This will take you to your *SkyDrive*

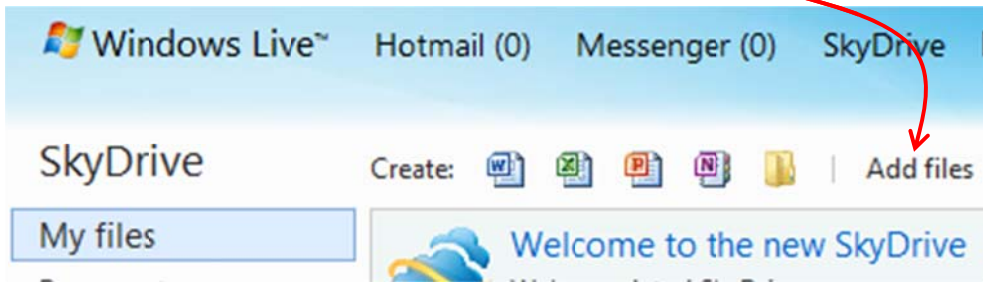


3. You can create a folder by clicking *Create Folder*.

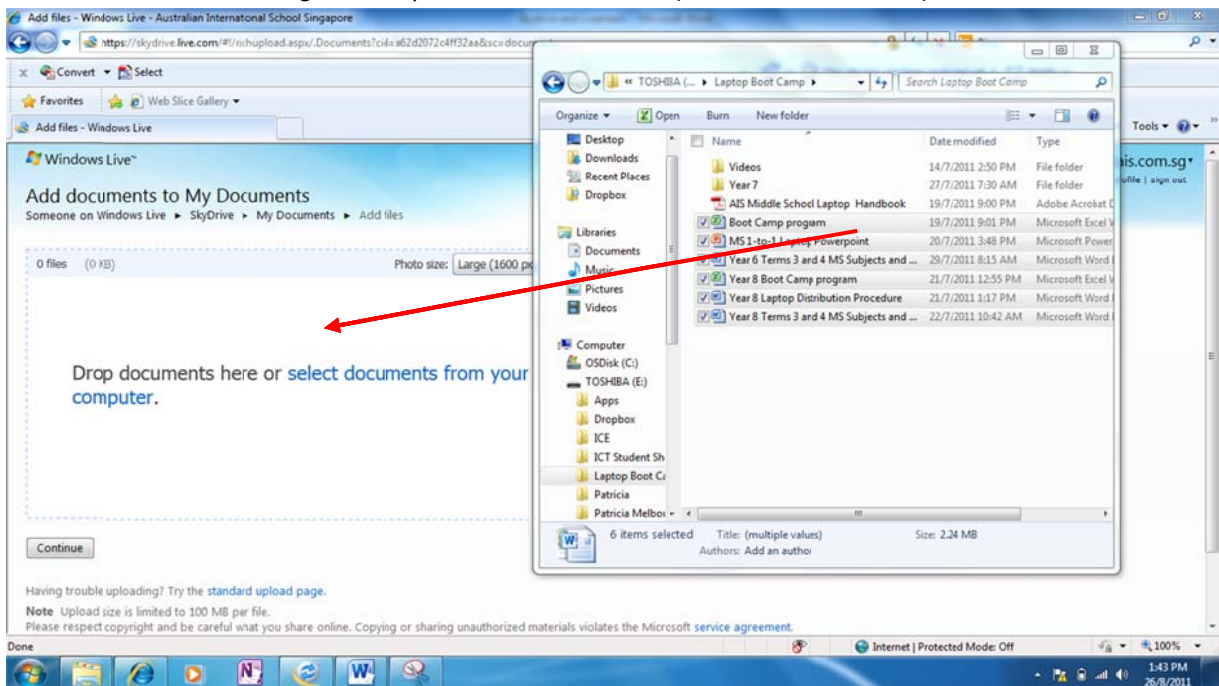


AIS SkyDrive and Live Mesh

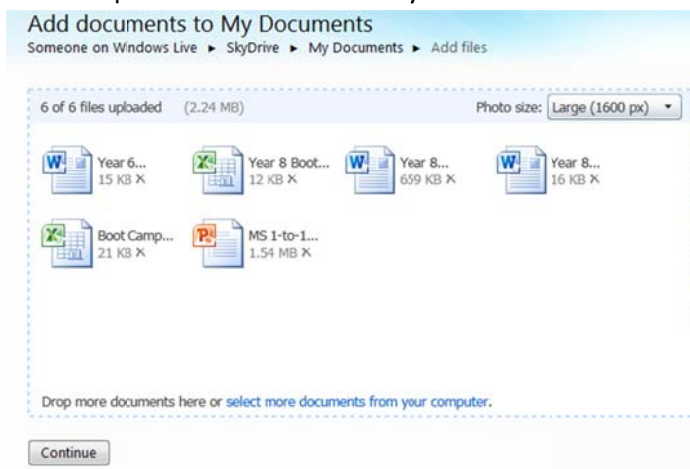
4. Click *Add Files* to upload files into the folder you have selected.



5. You can then *Drag and Drop* files into this folder. (100 Mb file size limit)



6. The files will then be copied into the folder on SkyDrive. C.lick *Continue*



AIS SkyDrive and Live Mesh

7. It will confirm your files added.

Create: | Add files

Welcome to the new SkyDrive
We've updated SkyDrive so you can easily find all your files, photos, and the stuff you share with groups in c

My Documents
<https://profile.live.com/cid-A62D2072C4FF32AA> ▶ SkyDrive ▶ My Documents

Name	Date modified	Last modified by	Shared with
Boot Camp program	1 minutes ago	mark.holland7@stud...	Just me
MS 1-to-1 Laptop Powerpoint	1 minutes ago	mark.holland7@stud...	Just me
Skydrive and Livemesh	18 minutes ago	mark.holland7@stud...	Just me
Year 6 Terms 3 and 4 MS Subjects and U...	2 minutes ago	mark.holland7@stud...	Just me
Year 8 Boot Camp program	1 minutes ago	mark.holland7@stud...	Just me
Year 8 Laptop Distribution Procedure	1 minutes ago	mark.holland7@stud...	Just me
Year 8 Terms 3 and 4 MS Subjects and U...	1 minutes ago	mark.holland7@stud...	Just me

8. You can download the files as a .zip file which is very convenient.

Add files - Windows Live - Australian International School Singapore

<https://skydrive.live.com/#!richupload.aspx/Student%20Laptops?cid=a62d2072c4ff32aa&isc=documents&nl=1>

Convert Select

Windows Live™

Add documents to Student Laptops
Someone on Windows Live ▶ SkyDrive ▶ Student Laptops ▶ Add files

0 of 1 file uploaded (841 KB)

Year 8 Terms 3 and 4 MS Subjects and U... X

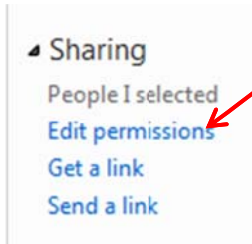
Drop more documents here or select more documents from your computer.

Continue

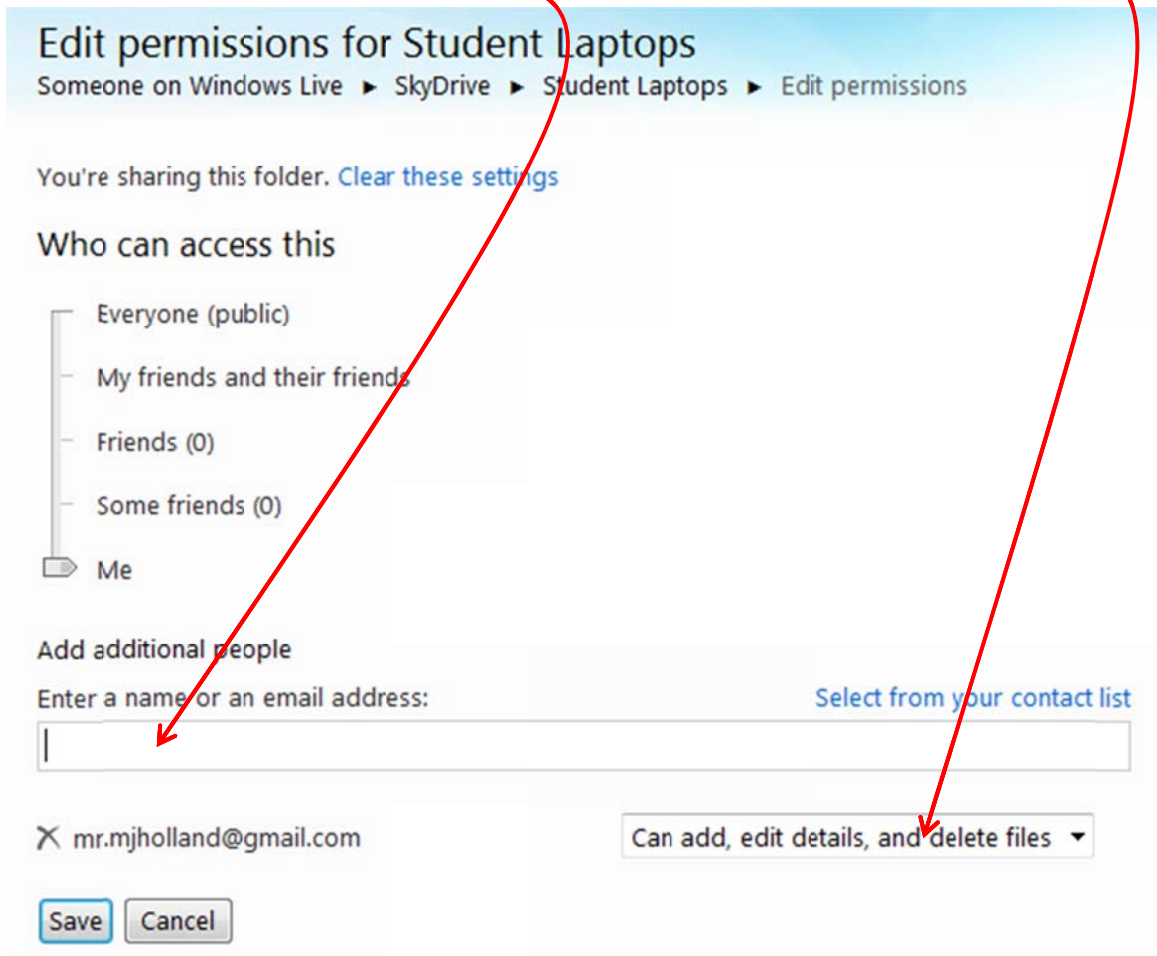
Computer ▶ TOSHIBA (E:) ▶ Laptop Boot Camp ▶

Name	Date modified
Videos	14/7/11
Year 7	27/7/11
AIS Middle School Laptop Handbook	19/7/11
Boot Camp program	19/7/11
MS 1-to-1 Laptop Powerpoint	20/7/11
Year 6 Terms 3 and 4 MS Subjects and ...	29/7/11
Year 8 Boot Camp program	21/7/11
Year 8 Laptop Distribution Procedure	21/7/11
Year 8 Terms 3 and 4 MS Subjects and ...	22/7/11
Year 8 Terms 3 and 4 MS Subjects and ...	26/8/11

9. You can share the whole folder by clicking on *Edit Permissions*, and any files can be accessed by those you choose to share with.

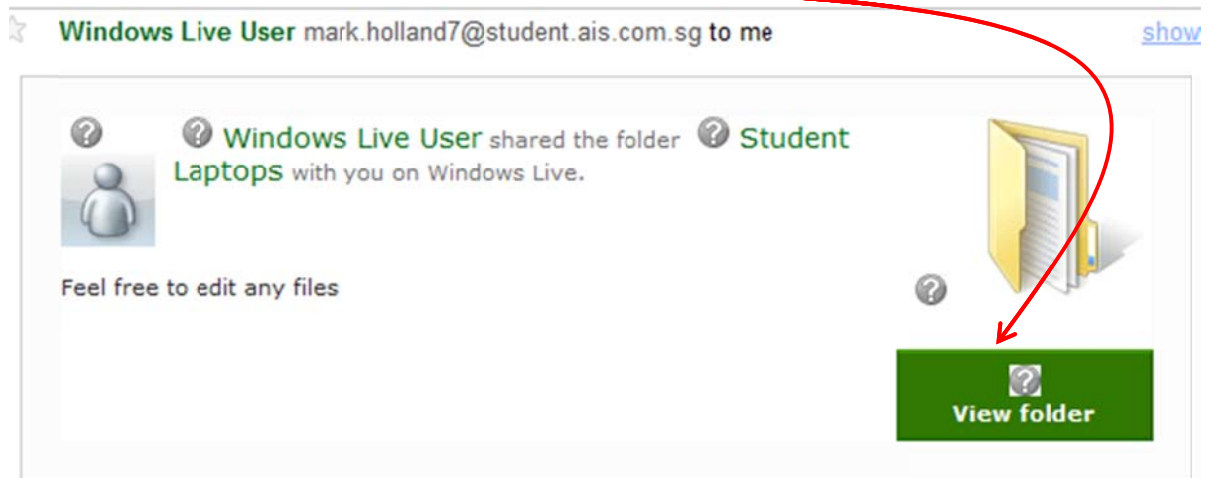


10. You can enter the email address of the person you want to share with and set their permissions.



AIS SkyDrive and Live Mesh

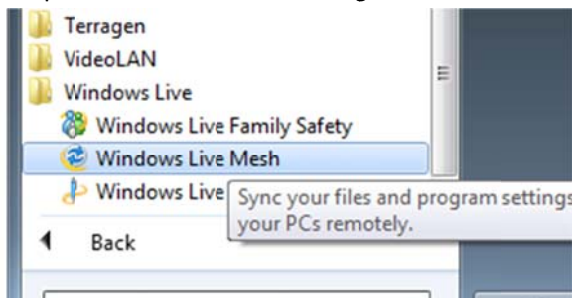
11. And you need to send an email to the person who you want to share with and they will get a link to the folder.



12. You can store up to 25 Gb of files in Skydrive!

Live Mesh

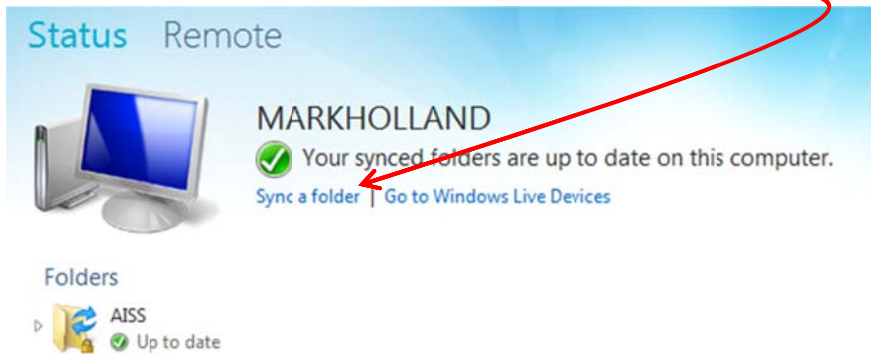
1. With Windows Live Mesh 2011 you can sync folders on your PC with Windows Live SkyDrive Synced Folders. With Live Mesh open in the back ground, it will sync the folders automatically. It will allow up to 5Gb in storage for free.
2. You can open Live Mesh from *All Programs*



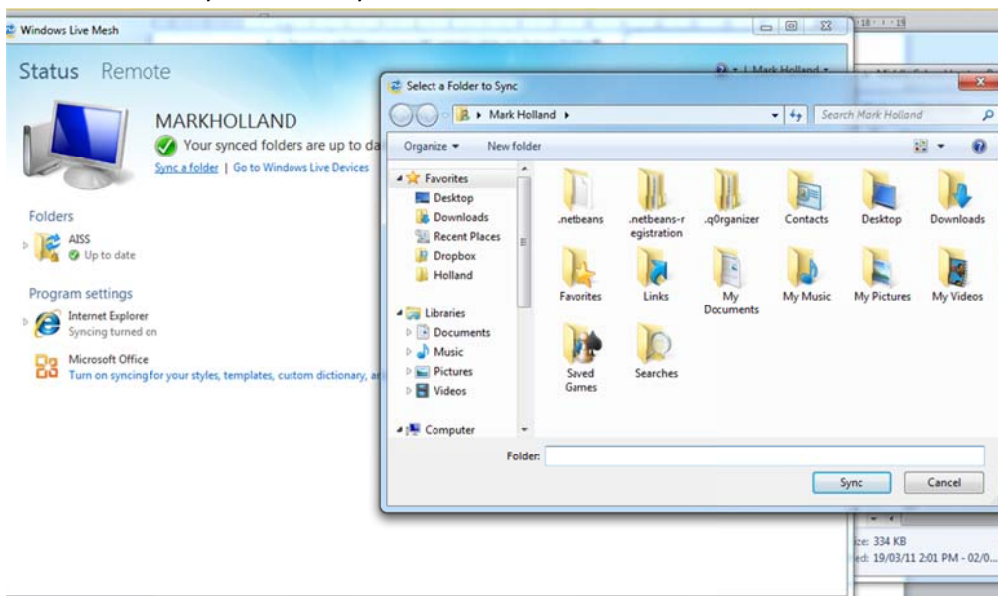
3. If you don't have Live Mesh, you can download it from here:
<http://explore.live.com/windows-live-mesh?os=other>

AIS SkyDrive and Live Mesh

- To sync a folder on your PC simply click on *Sync a folder*



- Select the folder you wish to sync



- Select Skydrive synced storage

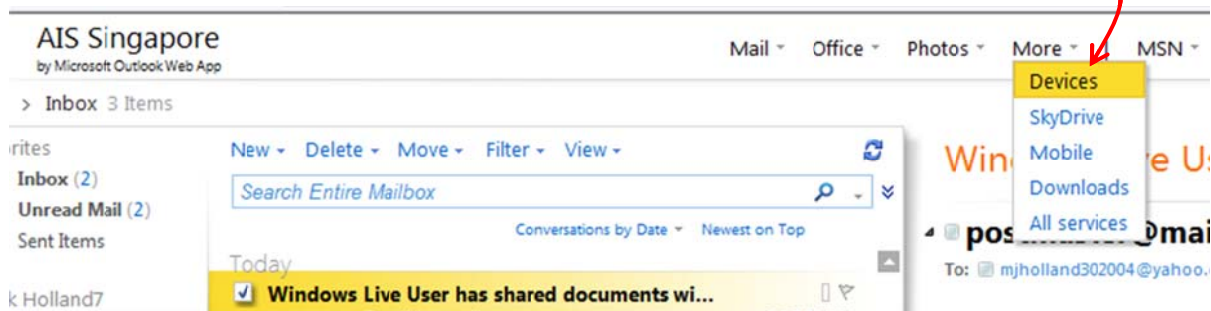


AIS SkyDrive and Live Mesh

- This folder will now be added to your list of synced folders.



- To perform the sync make sure you open Live Mesh. It will sync in the background.
- You can Access the synced folder through *Devices* in the *More* menu.




- Click on *SkyDrive* synced storage




11. You will be able to see all of your synced files.





Synced folders

 **School Work**
Up to date
This folder syncs on: VANNASACK1741, SkyDrive synced storage

[View all synced folders](#)

 **School Work**
Someone on Windows Live ▶ Devices ▶ Synced folders ▶ School Work

[Select devices](#) [Edit permissions](#) [Stop syncing](#)

 Laptop Info  Mark English Workbook  School Work  Term 4